

# THE WESTOVER 1845

39' WIDE 62' DEEP **ADVANTAGE COLLECTION**



CRAFTSMAN



CLASSIC



TRADITIONAL

\*Floor plan flyers are for illustrative purposes only. We're always working to make our CBH floor plans even better. Floor plans are subject to change and available spec homes may have variations that are different than the floor plan and options shown on this flyer. Common options are shown as red dots and may or may not be included in the available spec home. Community specific requirements and/or elevation styles may cause elevation details, masonry and window placement variations. Room dimensions and ceiling heights are approximated based on main room-defining walls. Buyer's and buyer's agent to verify all room dimensions and available spec home specific floor plan details and options. See a CBH Sales Specialist for details. Marketed by CBH Sales & Marketing, Inc. RCE-923. Updated 4/13/20



# THE WESTOVER 1845

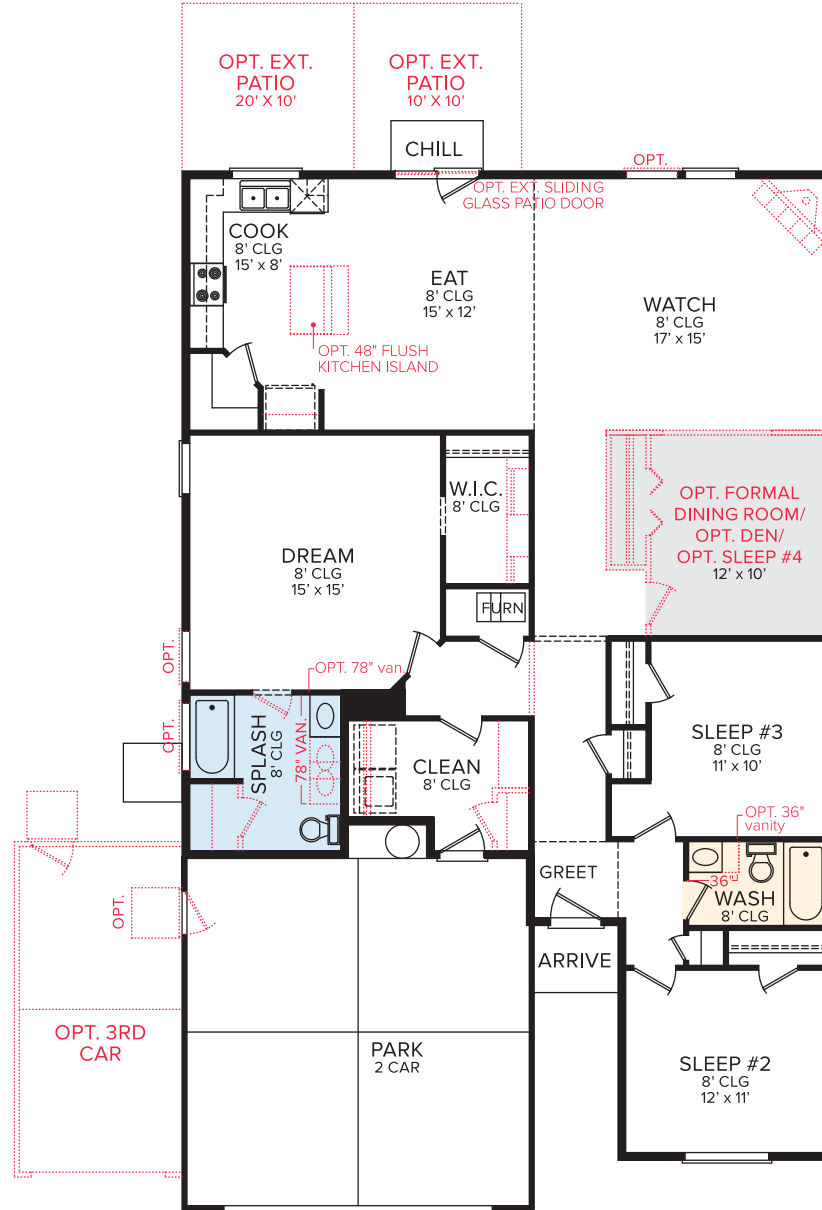
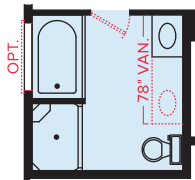
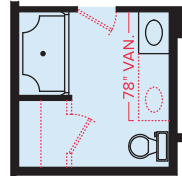
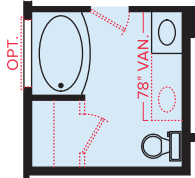
39' WIDE 62' DEEP

🚗 3-4 🚿 2 🚗 2-3

## OPT. KITCHEN CONVERSION

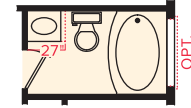
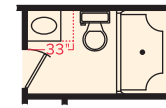


## OPT. MASTER BATH ROOM CONVERSIONS



MAIN LEVEL

## OPT. HALL BATH ROOM CONVERSIONS



## OPT. ROOM CONVERSIONS

