

# THE VALLEJO 2700

55' WIDE 54' DEEP

🚗 4-6 🏠 2.5-3.5 🚗 3-5

**CBH** HOMES  
RCE-923



TRADITIONAL



CRAFTSMAN



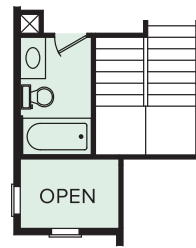
COTTAGE



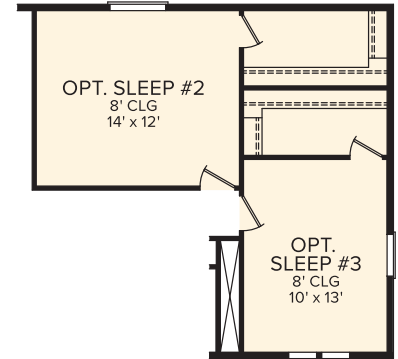
BUNGALOW

## UPPER LEVEL

OPT. BATH  
CONVERSION::



OPT. SLEEP 2/SLEEP 3  
CONVERSION::

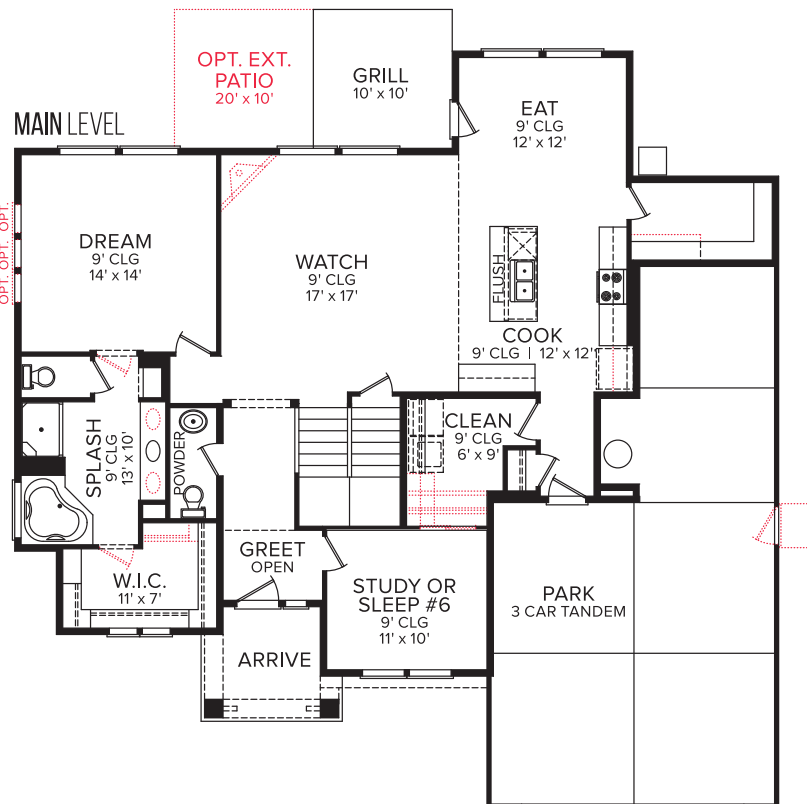


NOTE: If opt. conversion is selected  
furnace will move to attic.

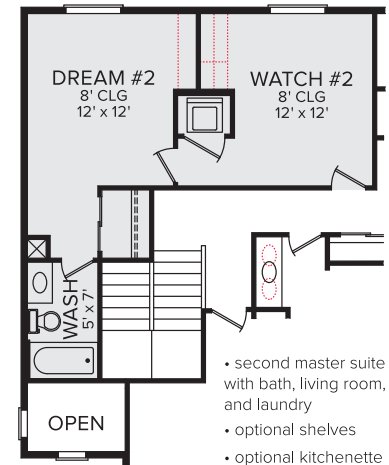
## MAIN LEVEL

OPT. EXT.  
PATIO  
20' x 10'

OPT. OPT. OPT.



*Spellingwood*  
OPT. CONVERSION



- second master suite with bath, living room, and laundry
- optional shelves
- optional kitchenette

\*See printable flyer for all room conversion options. Additional options shown in red dots. We're always working to make our great floorplans even better. As a result, all floorplans are subject to change. Slight variations of window placement/popouts and floorplan may result due to elevation differences. Community specific requirements may cause elevation variations also. Room dimensions and ceiling heights are approximated based on main room-defining walls. Masonry subject to community standards specifics. Buyer's and buyer's agent to verify all room dimensions. See a CBH Sales Specialist for details. Marketed by CBH Sales & Marketing, Inc. RCE-923. Updated 5.21.19

