

THE CORAL 1699

38' WIDE 60' DEEP ADVANTAGE COLLECTION



CRAFTSMAN WITH OPT. FULL PORCH



CLASSIC



TRADITIONAL

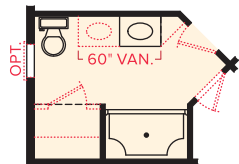
*Floor plan flyers are for illustrative purposes only. We're always working to make our CBH floor plans even better. Floor plans are subject to change and available spec homes may have variations that are different than the floor plan and options shown on this flyer. Common options are shown as red dots and may or may not be included in the available spec home. Community specific requirements and/or elevation styles may cause elevation details, masonry and window placement variations. Room dimensions and ceiling heights are approximated based on main room-defining walls. Buyer's and buyer's agent to verify all room dimensions and available spec home specific floor plan details and options. See a CBH Sales Specialist for details. Marketed by CBH Sales & Marketing, Inc. RCE-923. Updated 4/13/20

THE CORAL 1699

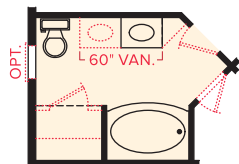
38' WIDE 60' DEEP

3-4 2 2-3

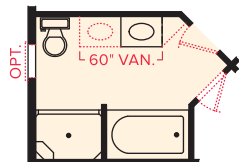
OPT. MASTER BATH ROOM CONVERSIONS



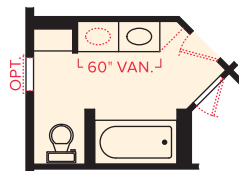
- 5' shower w/ two corner seats chrome/clear enclosure
- OPT. 60" van. & OPT. dual sinks



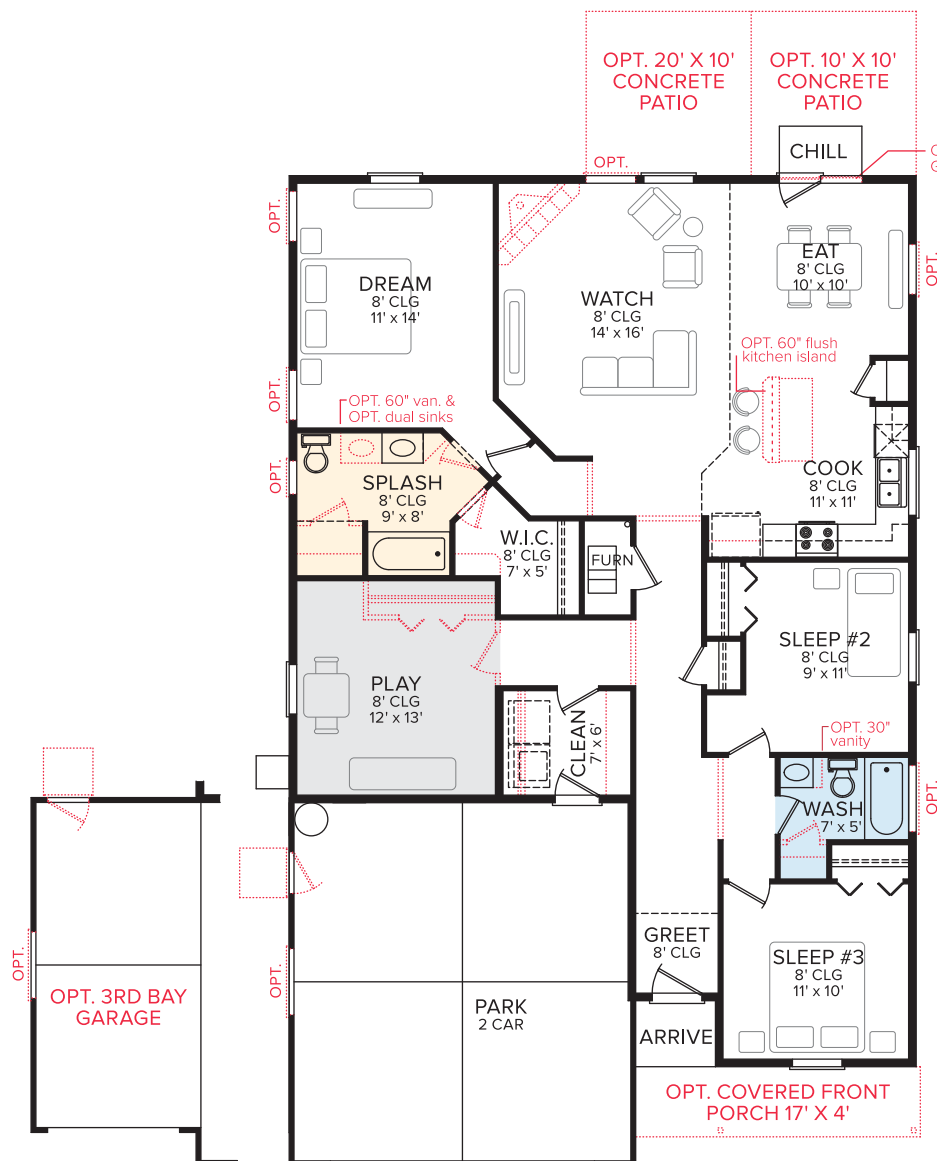
- 60" x 42" oval tub/shower
- OPT. 60" van. & OPT. dual sinks



- 4' shower w/ one corner seats, chrome/clear enclosure & soaker tub
NOTE: linen closet may not be selected
- OPT. 60" van. & OPT. dual sinks

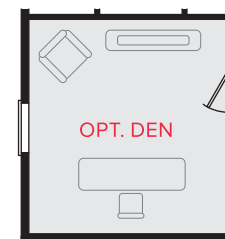
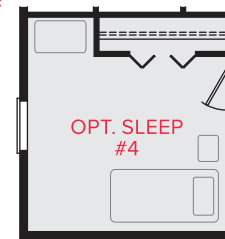


- 5' tub/shower, 5 shelves & toilet on opposite side
NOTE: linen closet may not be selected
- OPT. 60" van. & OPT. dual sinks

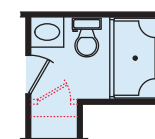


MAIN LEVEL

OPT. PLAY CONVERSIONS



OPT. HALL BATH ROOM CONVERSION



- 5' shower w/ two corner seats, chrome/ clear enclosure