

THE CAPRI 1530

40' WIDE 55' DEEP

3 2 2-3

CBH HOMES
RCL-923



TRADITIONAL



COTTAGE



CREFTSMAN



BUNGALOW

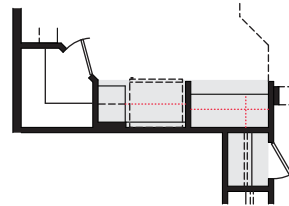


TUSCAN



MODERN

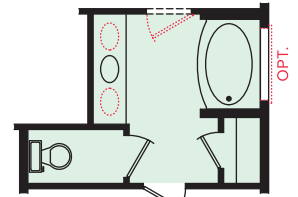
OPTIONAL TECH DESK



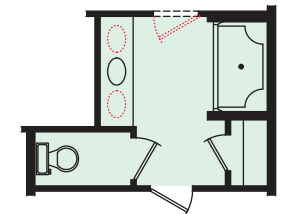
- OPT. 15" drawer base
- OPT. upper cabinets
- Note: Hall closet is reduced in size

OPT. EXT. PATIO 19' x 12'

OPT. MASTER BATH ROOM CONVERSIONS

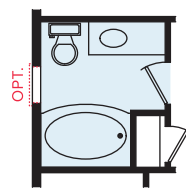


- 60" x 42" oval tub/shower

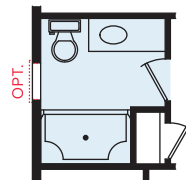


- 5' shower w/ two corner seats, chrome/ clear enclosure

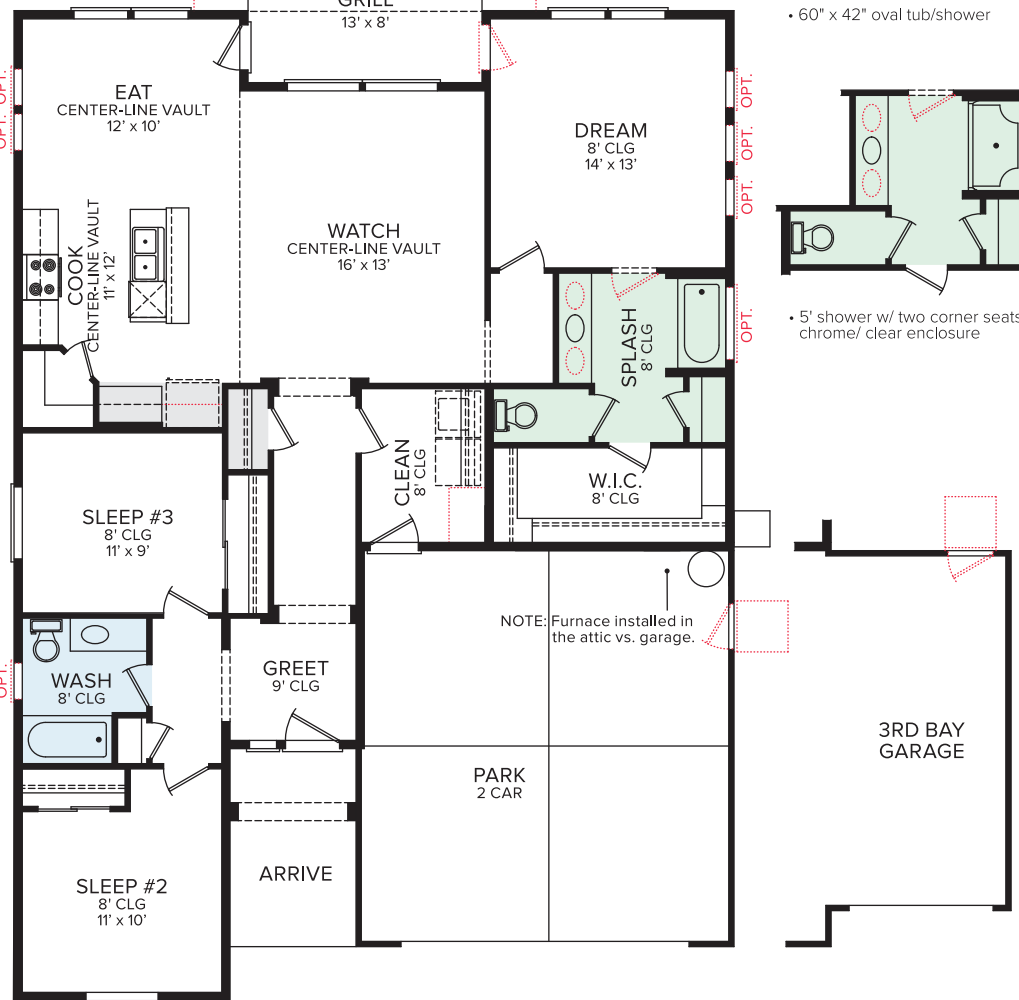
OPT. HALL BATH ROOM CONVERSIONS



- 60" x 42" oval tub/ shower



- 5' shower w/ two corner seats, chrome/ clear enclosure



MAIN LEVEL

*Floor plan flyers are for illustrative purposes only. We're always working to make our CBH floor plans even better. Floor plans are subject to change and available spec homes may have variations that are different than the floor plan and options shown on this flyer. Common options are shown as red dots and may or may not be included in the available spec home. Community specific requirements and/or elevation styles may cause elevation details, masonry and window placement variations. Room dimensions and ceiling heights are approximated based on main room-defining walls. Buyer's and buyer's agent to verify all room dimensions and available spec home specific floor plan details and options. See a CBH Sales Specialist for details. Marketed by CBH Sales & Marketing, Inc. RCE-923. Updated 4.13.20

