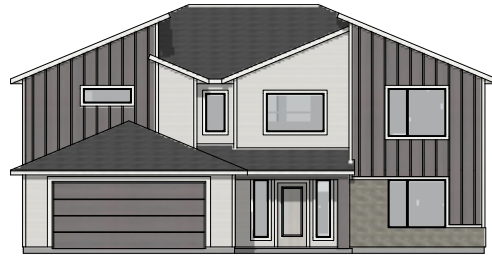


THE MILANO 3250

4 🚗 | 3 🏠 | 2-3 🚗



FARMHOUSE



MODERN

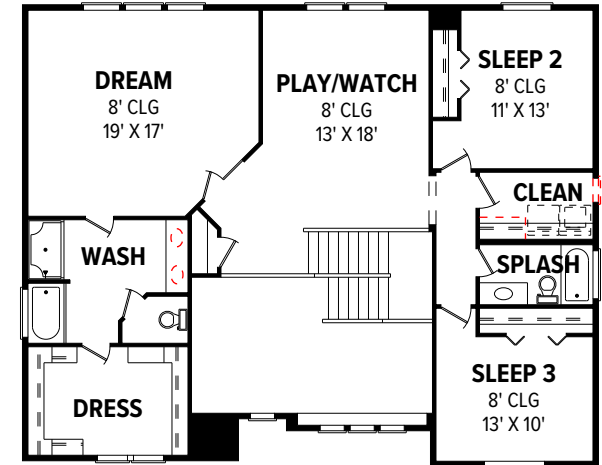


BUNGALOW



COTTAGE

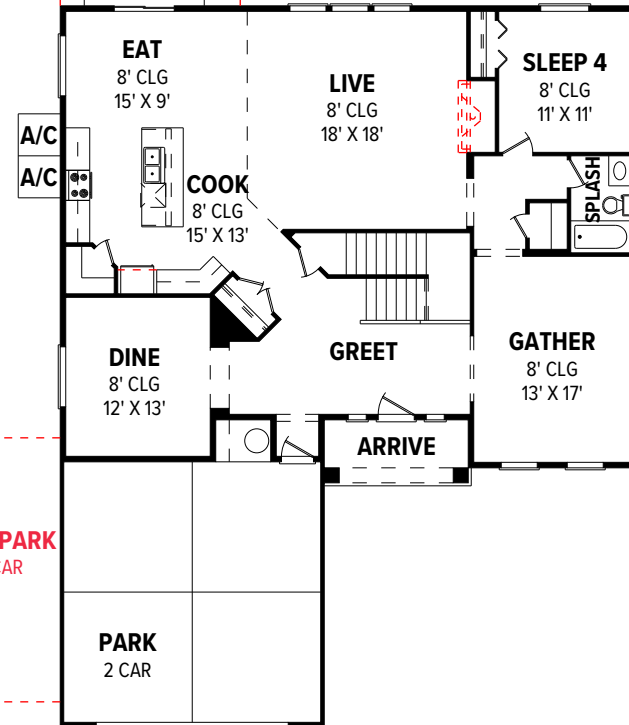
**NOTE: FURNACE
INSTALLED IN ATTIC**



UPPER LEVEL

**OPT. EXTENDED
GRILL
15' X 10'**

**GRILL
10' X 10'**



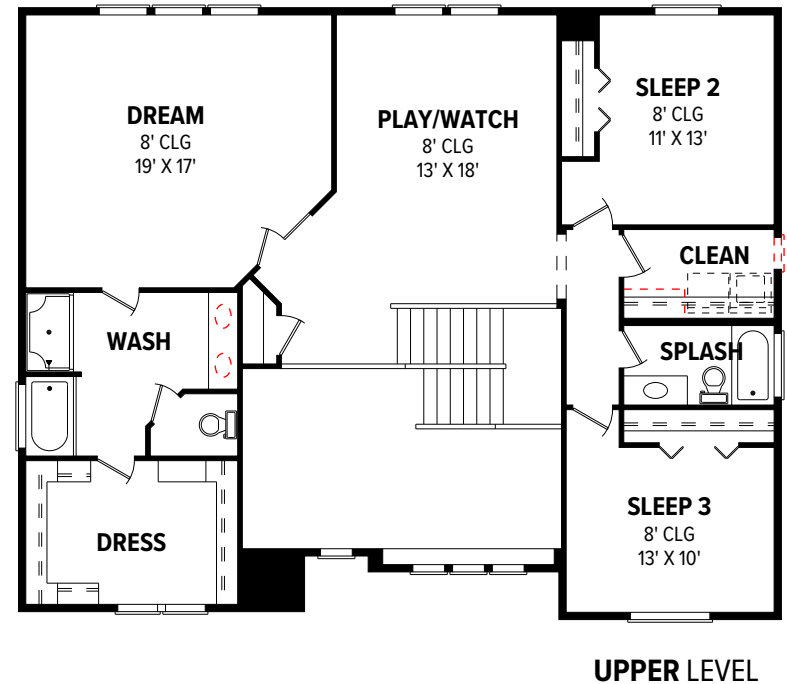
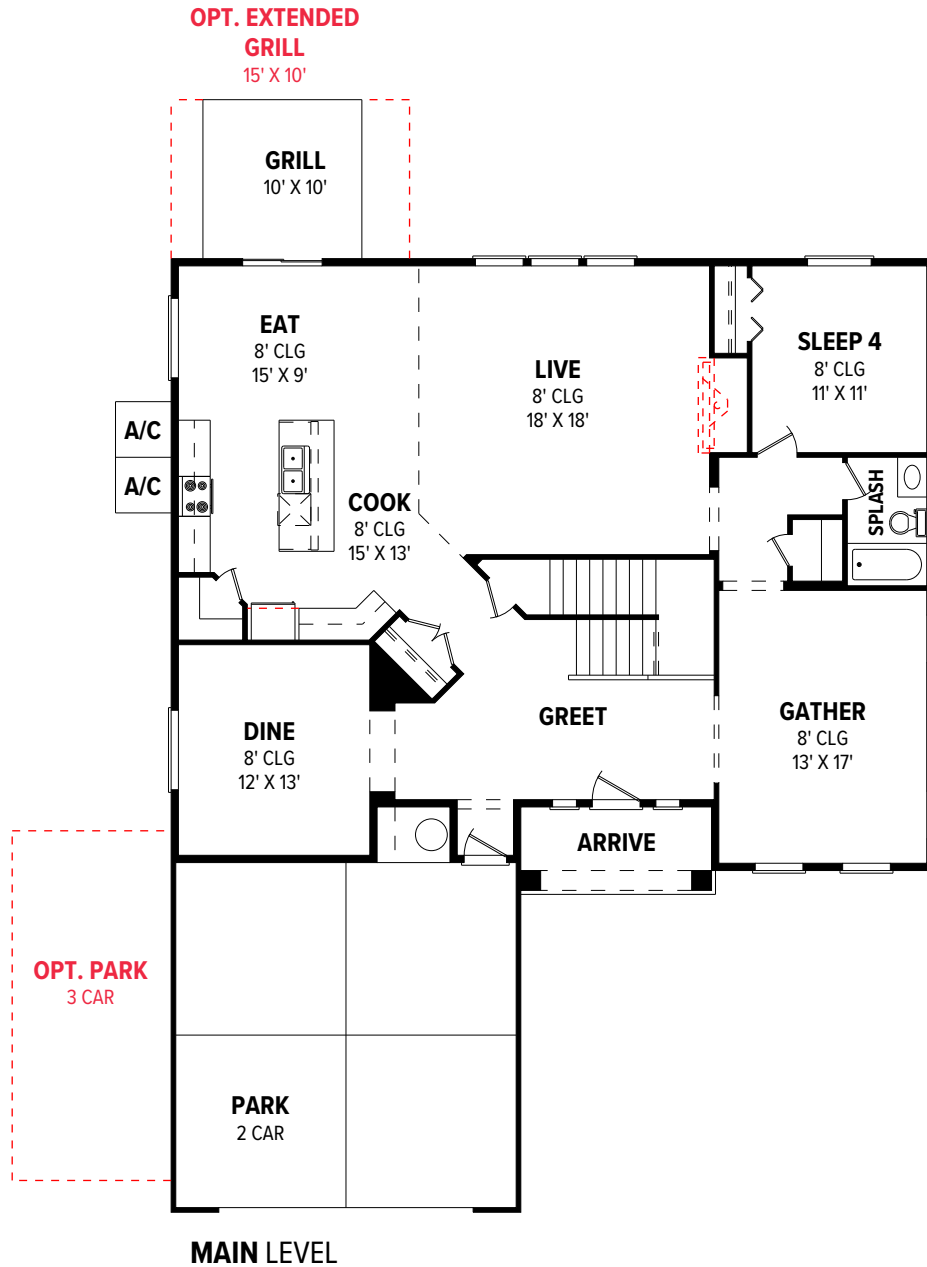
MAIN LEVEL

**OPT. PARK
3 CAR**

**PARK
2 CAR**

*Floor plan flyers are for illustrative purposes only. We're always working to make our CBH floor plans even better. Floor plans are subject to change and available spec homes may have variations that are different than the floor plans and options shown on this flyer. Common options are shown as red dots and may not be included in the available spec home. Community specific requirements and/or elevations styles may cause elevation details, masonry, and window placement variations. Room dimensions and ceiling heights are approximated based on main room-defining walls. Buyer and buyer's agent to verify all room dimensions and available spec home specific floor plan details and options. See a CBH Sales Specialist for details. Marketed by CBH Sales and Marketing, Inc. RCE-923. Updated 10.23.23

THE MILANO 3250



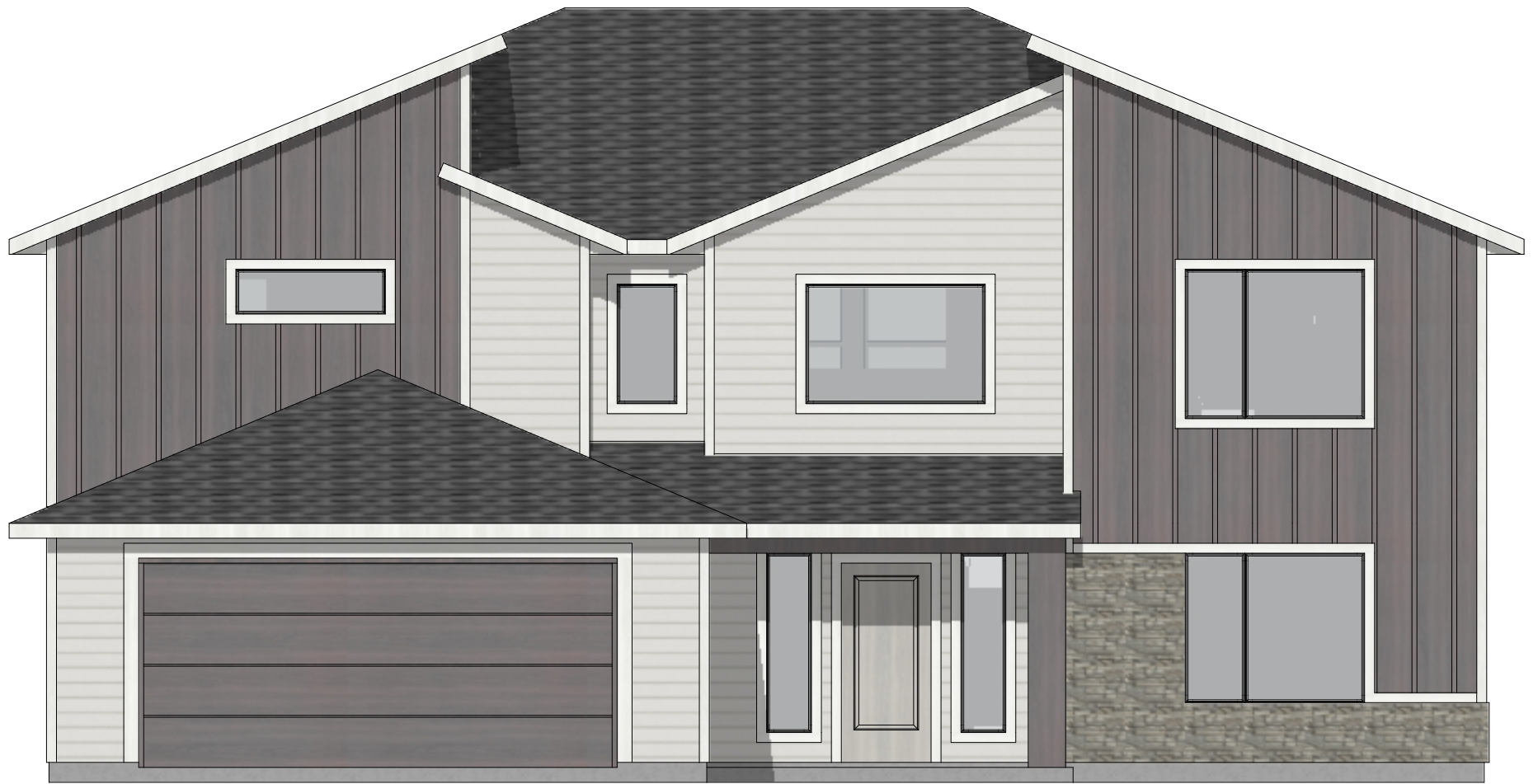
**NOTE: FURNACE
INSTALLED IN ATTIC**



COTTAGE



BUNGALOW



MODERN



FARMHOUSE